

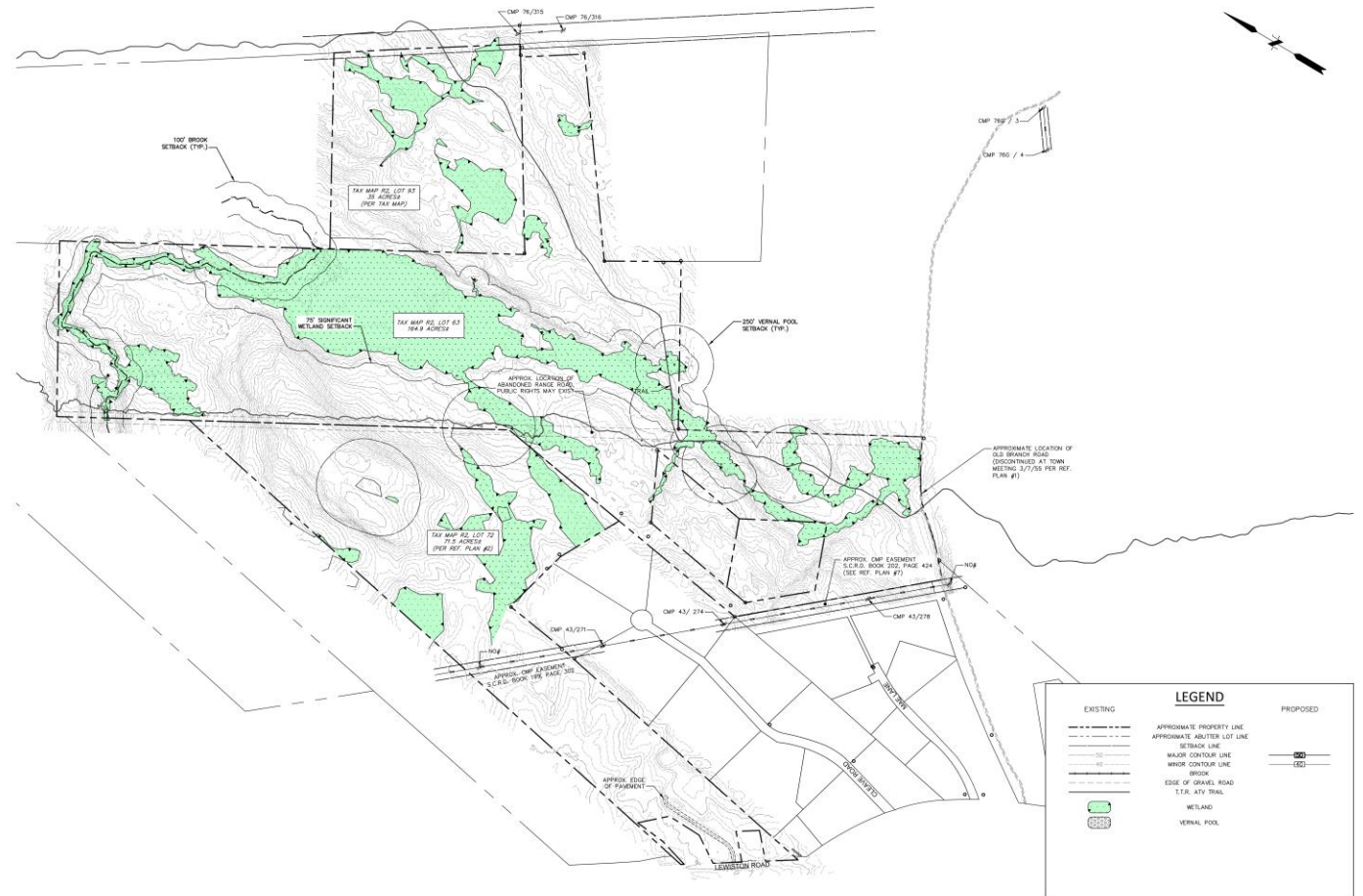


GLENVALE LLC  
TOPSHAM MEADOW SOLAR STATION  
TOPSHAM STAFF MEETING

MARCH 30, 2021

# PROJECT OVERVIEW – EXISTING CONDITION

- Topsham Meadow Solar Station LLC has leased land from David Anderson R02-063, Cornerstone Church R02-072 and The Lapointes R02-093.
- The proposed project will use approximately 150-acres of land on these properties.
- The property being leased is currently not in Tree Growth
  - It has been logged periodically over the years.
  - It has not been harvested in quite some time.
- A CMP Transmission Line corridor crosses the property to the south making it ideal for the development of the lot for a Solar Development.
- Currently CMP accesses the Transmission Line where it crosses Old Branch Road.



**Existing Condition**

# PROJECT OVERVIEW –SOLAR STATION

- Topsham Meadow Solar Station’s goal is to provide clean, reliable energy to Maine ratepayers while protecting the local environment.
- Topsham Meadow Solar Station is proposed west of Old Branch Road on Tax Map R02 Lots 63, 72 and 93 in the Town of Topsham.
- The proposed project will lease approximately **200-acres** of land on Topsham Tax Map R02 Lot 63, 72 and 93.
  - **150-acres**+/- will be used directly as part of the solar station
  - Remainder will be used as stream buffer, significant Wetland Buffer, Significant Vernal Pool Buffer and shade buffer.
- The project will connect to the CMP transmission system directly on site in the south east corner off of Old Branch Road; no transmission line construction will be required.
- Site access begins at the end of Old Branch Road.

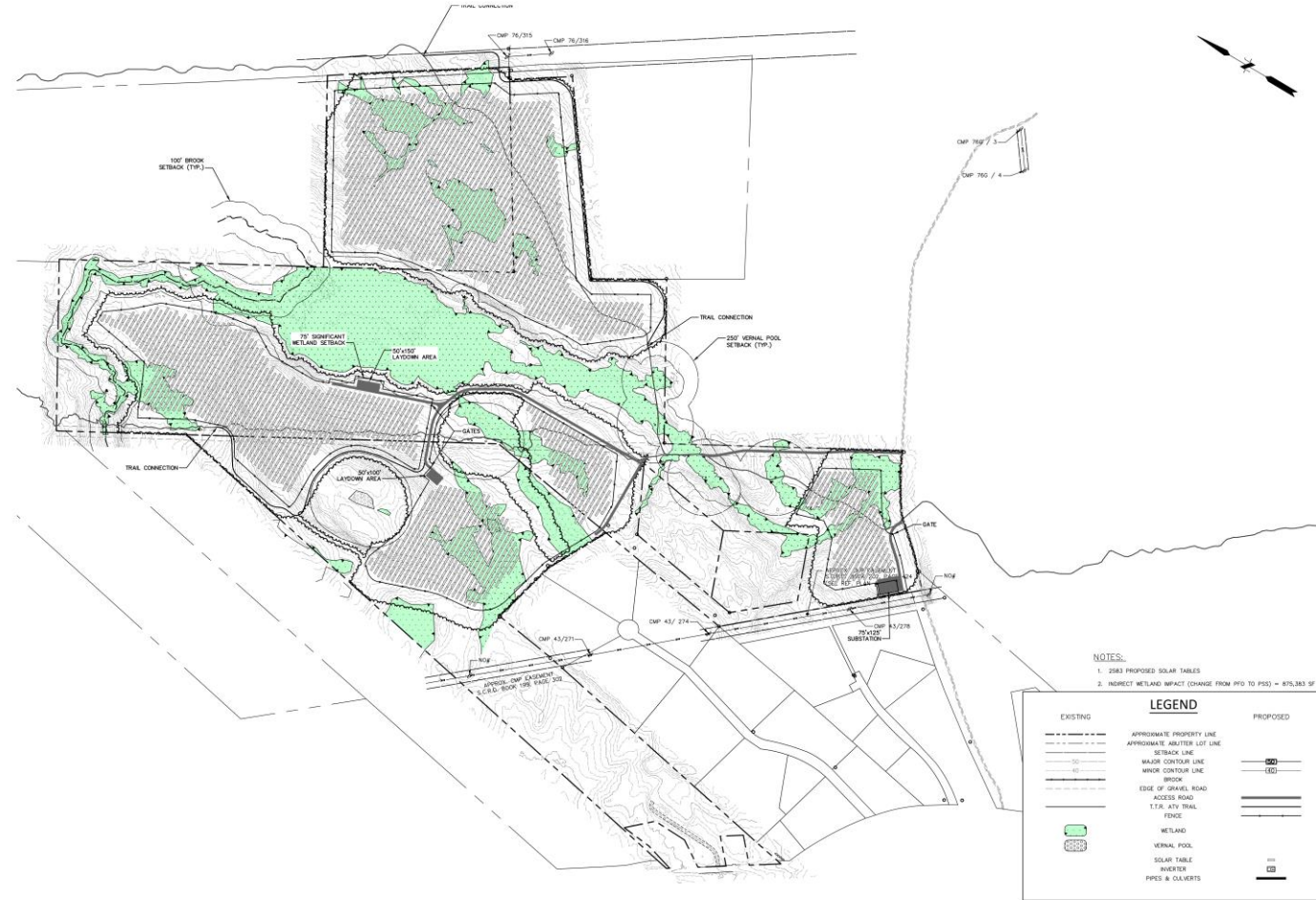


**Topsham Meadow Solar Station**

# PROJECT OVERVIEW

Emery Meadow Solar Station consists of:

- 23.7 MW DC+/-;
- 18.4 MW AC+/-;
- 16.3 MW AC+/-  
(at point of interconnection)
- 47,460+/- 500W (or better) solar modules
- Single Axis Trackers;
- 18-ft row spacing;
- 6 to 7 SMA 4600 inverters.



# INTERCONNECTION

- Proposed interconnection to Central Maine Power's Transmission Corridor on-site (typical interconnection facility shown);
- Working with Vysus Group and Solar Design Associates for electrical design;
- Holds a position in the ISO-NE interconnection queue
- System Impact Study (SIS) to occur in 2021



***Typical Substation at point of interconnect – located on site adjacent to transmission line***

# SITE DESIGN CONSIDERATIONS

- Connect to existing CMP infrastructure; no transmission line construction
- Minimize wetland and natural resource impacts; mitigate any unavoidable impacts
  - Only posts in the wetland being converted to wet meadow
- Design with topography in mind
  - Unique site topography lends itself to single axis trackers
- Provide safe access and security for the site (perimeter fence)
- Provide Wooded buffer to the Streams on property
- Avoid impacting cultural resources and RTE (Rare Threatened Endangered) Species
- Avoid visual or noise pollution



**Topsham Meadow Solar Station**

# REGULATORY PROCESS

- Maine Department of Environmental Protection
  - Site Location of Development (Site Law)
  - Natural Resources Protection Act (NRPA)
  - Review by US Army Corp of Engineers
- Notice to Abutters
- Town of Topsham
  - Site Plan Permit
  - Building Permit



**Existing Condition**

# SITE LOCATION OF DEVELOPMENT APPLICATION

- Three types of development can trigger a Site Location of Development Act (SLODA) Permit:
  - Projects occupying more than 20 acres (This Project);
  - Large structures and subdivisions;
  - Oil terminal facilities.
- Permit is issued if a project meets applicable standards for :
  - Stormwater management;
  - Erosion and Sediment Control;
  - Groundwater protection;
  - Infrastructure;
  - Protection of wildlife and fisheries;
  - Noise.
- A Public Information Meeting Must be held Prior to Submission to the Department of Environmental Protection.
- A copy of the full permit application will be available at town offices and DEP Office the assigned licensing agent resides in.
- A request by abutters or other interested stakeholders for a public hearing in addition to project review by DEP Staff or a request that the Commissioner or Board of Environmental Protection assume jurisdiction over application must be received by the Department in writing, no later than 20 days after the application is found to be complete and accepted for processing but it is at the discretion of the Board if this meeting takes place.
- Throughout the application process public comment will be accepted.



# REGULATORY CONSIDERATIONS

- Site Law (SLODA) concerned with:
  - Stormwater Control of quantity, rate of flow leaving site
  - Stormwater quality, providing treatment so there is no degradation
  - Erosion and Sediment Control during Construction and afterward
    - Full Erosion Control Plan is being developed for project
- Natural Resource Protection Act (NRPA) concerned with:
  - Habitat protection; Provision of buffers to streams
    - Project will be creating pollinator habitat in the buffer areas
    - Working with ME Audubon and following best practices
  - Limiting impact to wetlands, streams and waterbodies
    - Only impacting wetlands for access road crossings and post locations
    - No Crossing of stream Streams
    - Stumps to remain in wetland converted to wet meadow



**Topsham Meadow Solar Station**

# QUESTIONS & ANSWERS

## Contact Information:

### Civil Engineer

Fuss & O'Neill

207-363-0069, x 2314

5 Fletcher St Suite 1

Kennebunk, ME 04043

### Project Owner

Topsham Meadow Solar Station LLC

c/o Glenvale LLC

179 Green St Suite 100

Boston, MA 02130

### Developer

Glenvale LLC

954-393-6754

179 Green St Suite 100

Boston, MA 02130