

An aerial photograph showing several rows of blue solar panels installed in a field. The panels are arranged in parallel lines, and the ground between them is light-colored and appears to be covered in gravel or sand. The perspective is from a high angle, looking down at the panels.

**GLENVALE LLC  
TURNER MEADOW SOLAR STATION**

**PUBLIC INFORMATIONAL  
MEETING**

**OCTOBER 20, 2022**

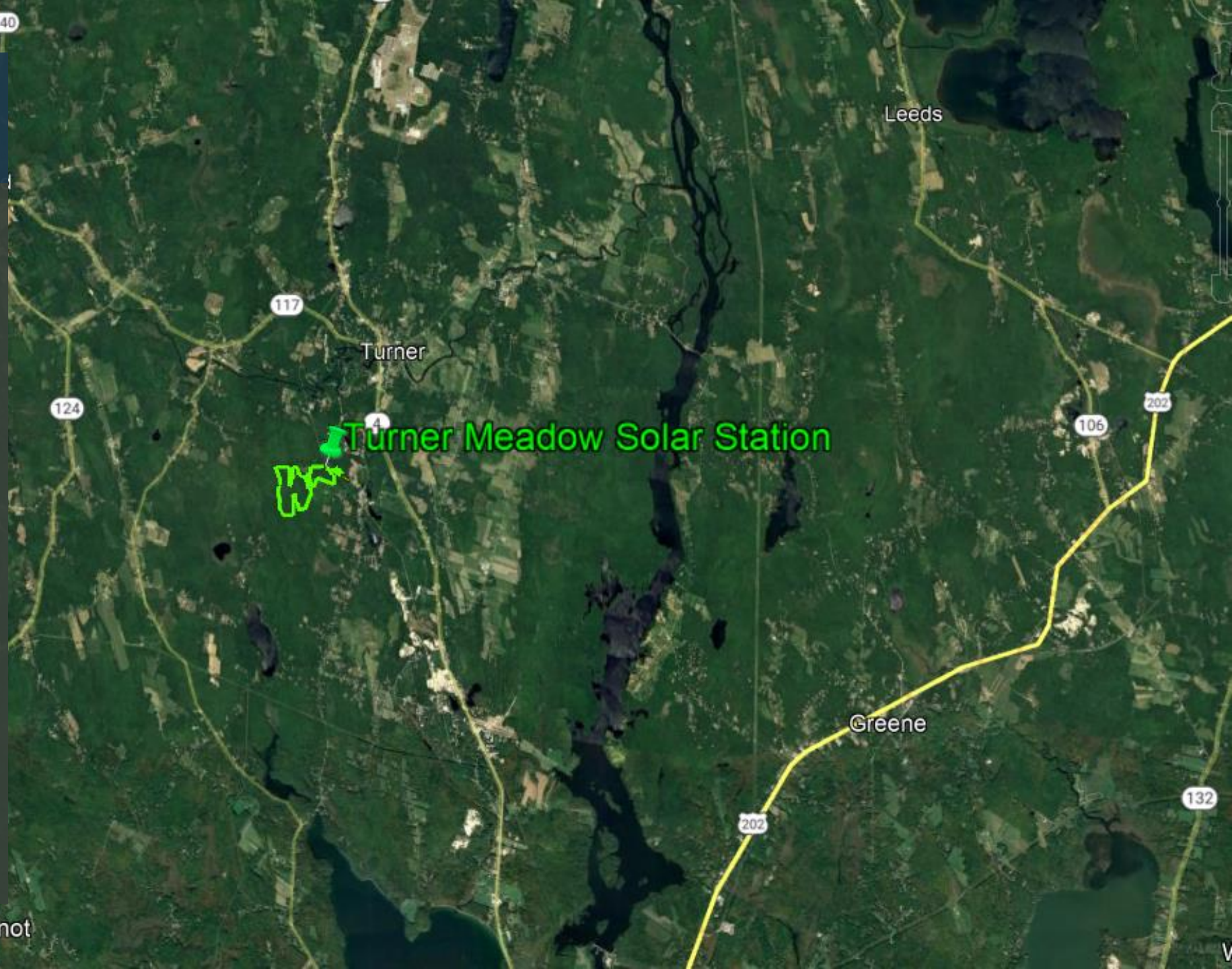


# AGENDA

- Project Overview
- Existing Site Overview
- Site Design Considerations
- Regulatory Process
- Project Contact Information
- Questions & Answers

# PROJECT OVERVIEW

- Turner Meadow Solar Station will provide clean, reliable energy to Maine ratepayers while protecting the local environment and character
- 25.9 MW DC, 20 MW AC utility-scale solar photovoltaic array
- 42,000 MWh of clean energy generated per year; enough to power 4,900 Maine homes
- Interconnecting to CMP's existing line (Section 50)
- Electricity will be sold to CMP at competitive rates
- Holds a position in the ISO-NE interconnection queue



# PROJECT OVERVIEW

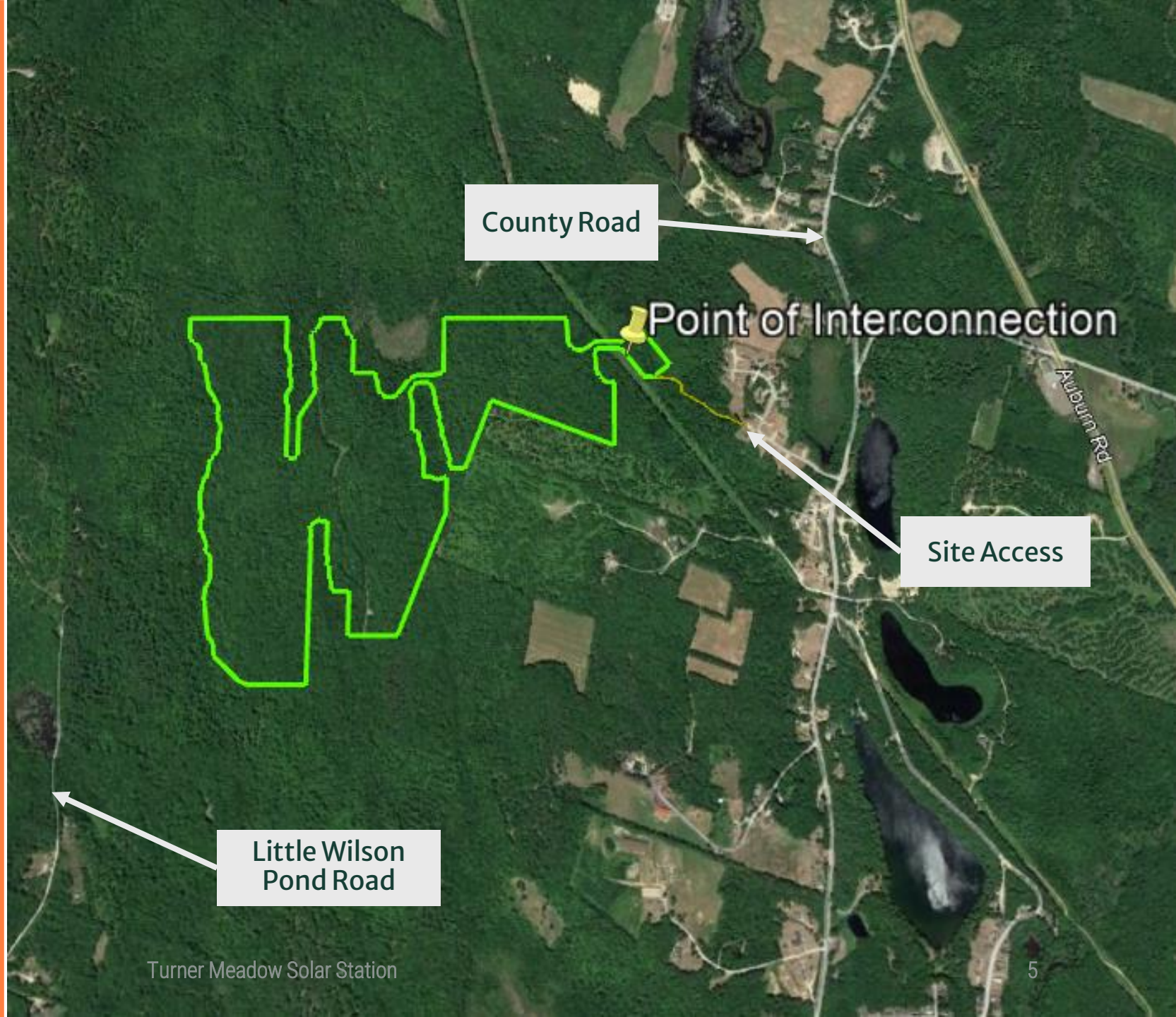
- Construction jobs for nearby residents – apprenticeships available
- Contracting opportunities for local businesses (e.g.: tree clearing, site-work, electrical and surveying)
- Major taxpayer requiring limited municipal services
- Facilitating continuation of recreational uses on-site
- Establish pollinator habitat



# PROJECT OVERVIEW

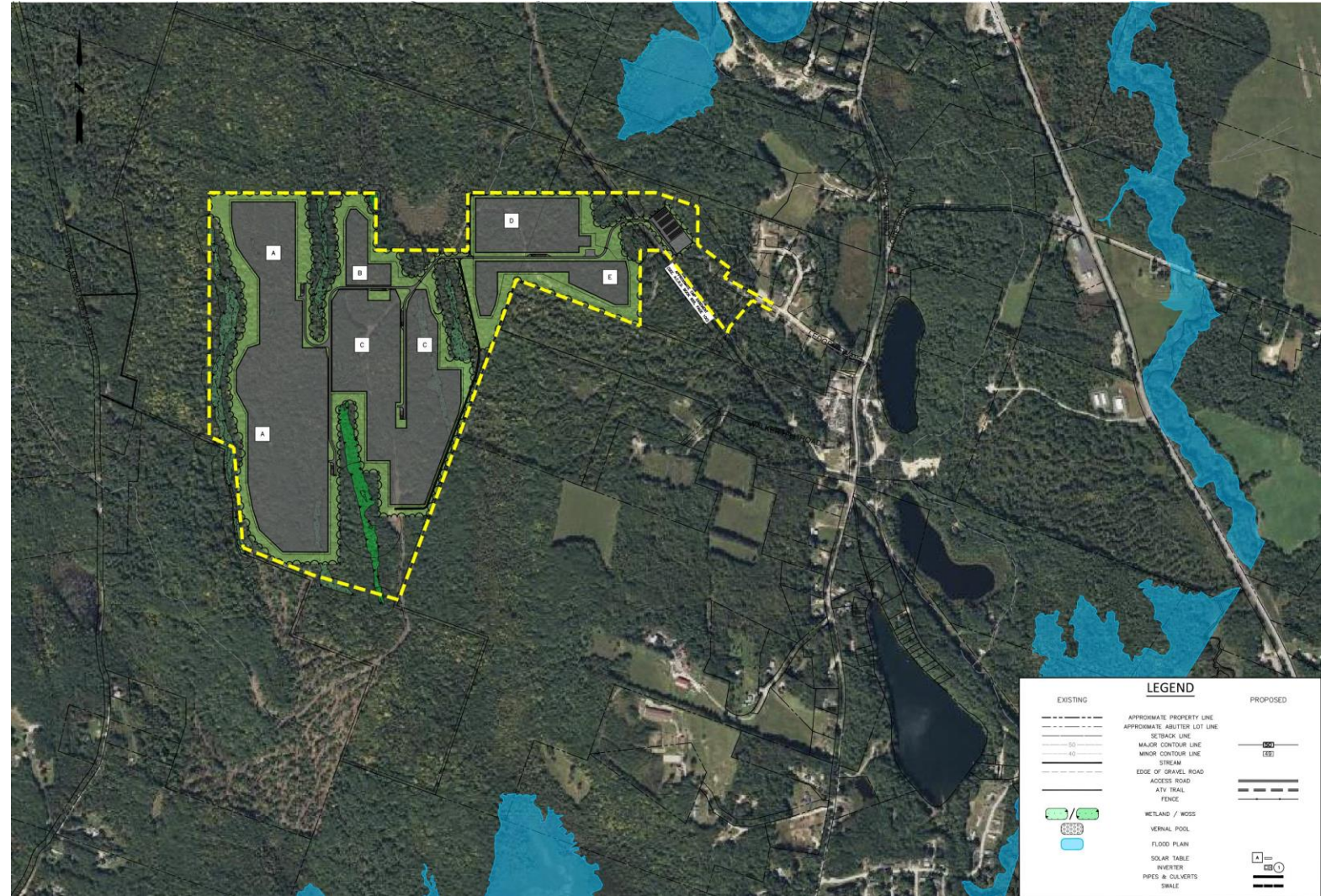
- Lease with Kurt & Karen Youland & Youland Convenience LLC.
- Overall project area is approx. 147 acres
- Interconnection into existing CMP transmission line
- Access from existing Ledgeview Drive entrance off County Road
- Tax Map 21 Lot 7 & Tax Map 27 Lot 6
- Rural I (Tax Map 27 Lot 6) & Rural II Zoning District (Tax Map 21 Lot 7)

10/20/2022



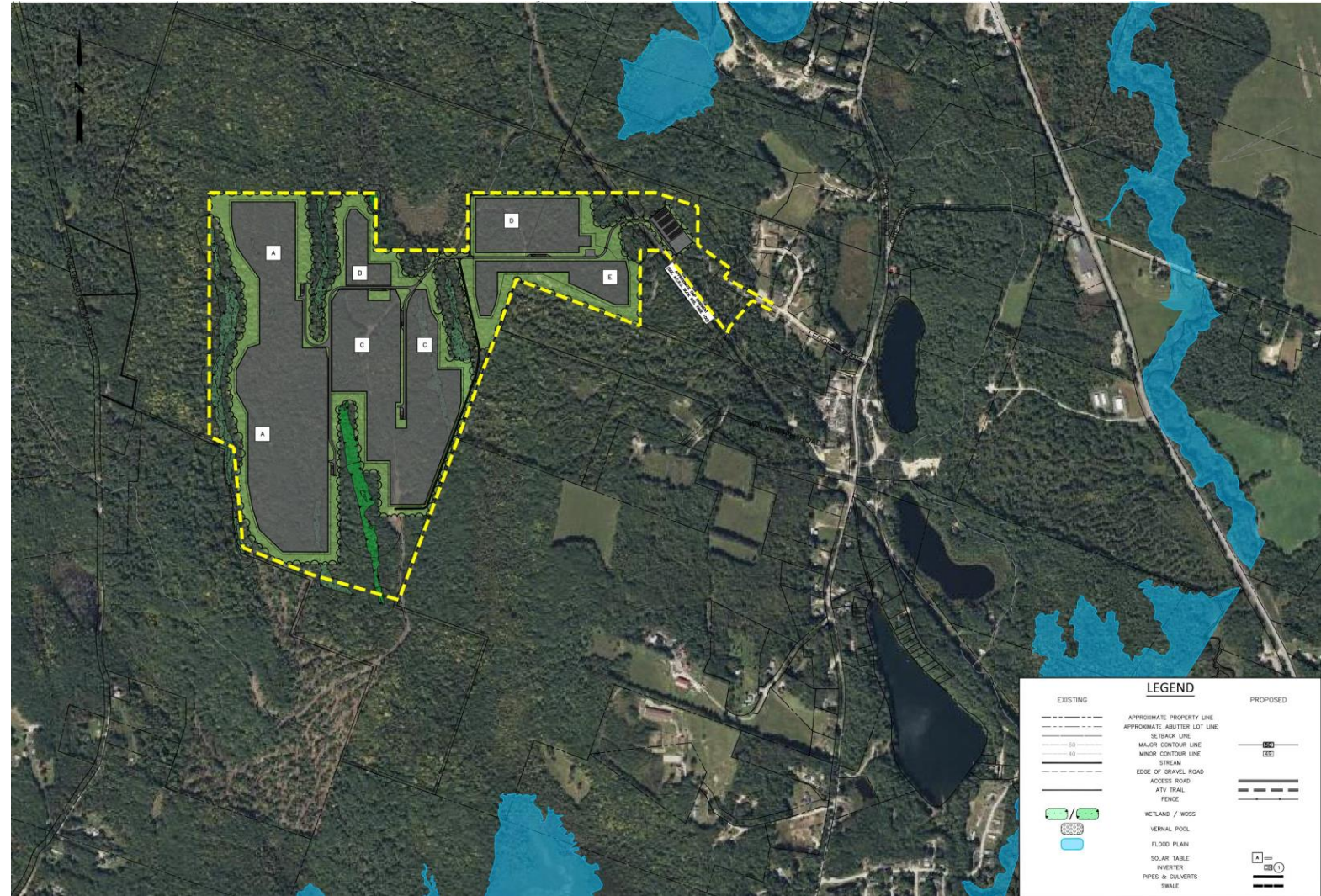
# SITE DESIGN CONSIDERATIONS

- Significant Vernal Pools (SVP) & streams
- Within watersheds of Lily Pond, Nezinscot River, and Meadow Brook.
- Minimize impact to streams and within SVP setbacks
- Minimize direct impacts to wetlands
- Stormwater controls to MDEP standards
- No construction within the 100-year floodplain



# SITE DESIGN CONSIDERATIONS

- No air emissions or odors
- Minimal traffic generation
- No sanitary wastewater discharge
- Avoid visual and noise impacts
- Not visible to abutters or adjacent roads
- Relocation of existing snowmobile trail
- Financial surety for decommissioning will be established







# PROJECT CONTACT INFORMATION

---

- Civil Engineer – Fuss & O’Neill (James Lowery, P.E.)

Phone: 207-363-0069, x 2315

Address: 5 Fletcher St Suite 1, Kennebunk, ME 04043

- Owner – Turner Meadow Solar Station LLC

Address: c/o Glenvale LLC, 179 Green St Suite 100, Boston MA 02130

- Developer – Glenvale LLC

Ari Jackson – Development Director

Aidan Foley – Principal



# QUESTIONS & ANSWERS



[www.glenvale.solar](http://www.glenvale.solar)