



**GLENVALE LLC
WARREN MEADOW SOLAR STATION**

PUBLIC FORUM

DECEMBER 13, 2023



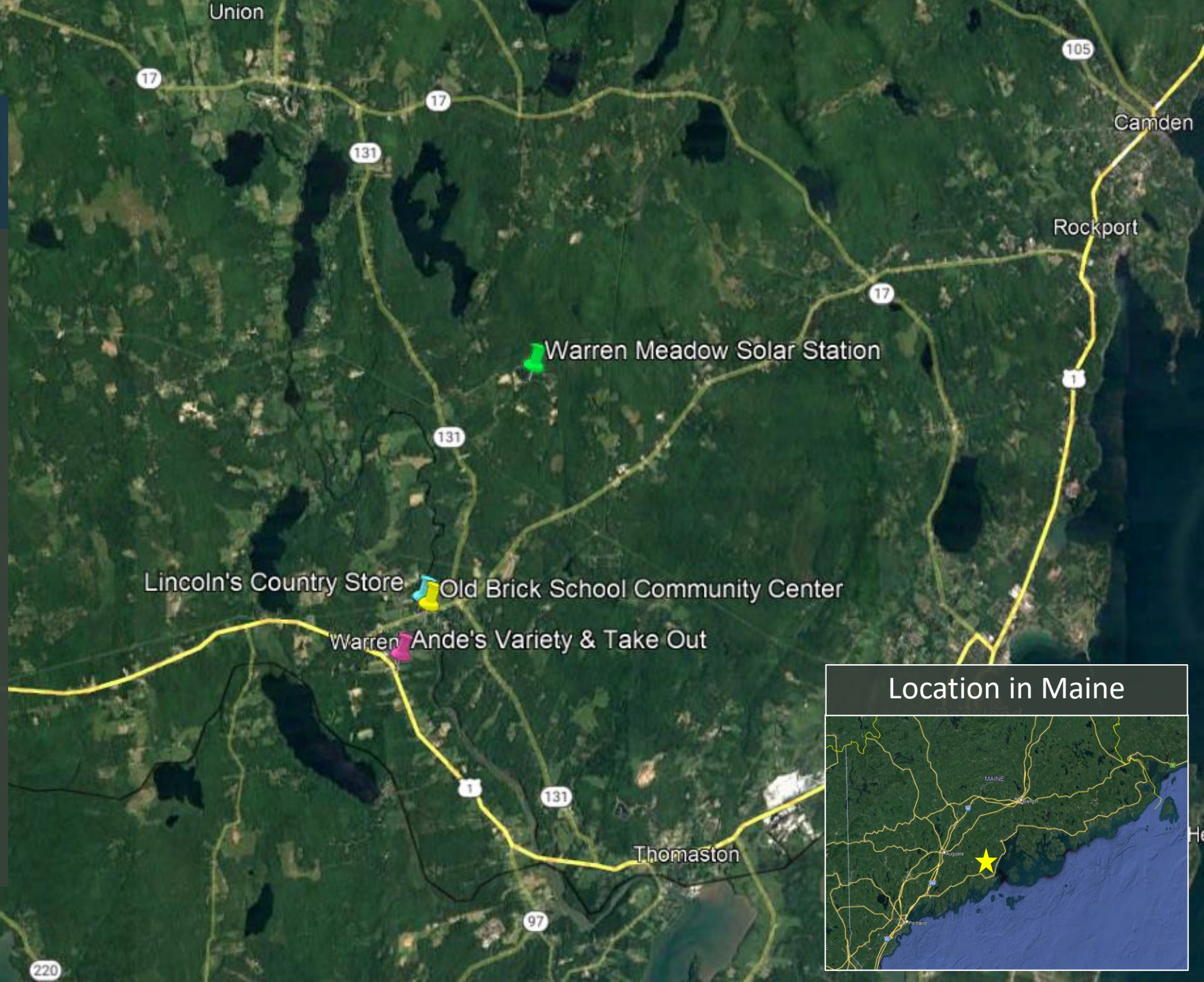
AGENDA

- Project Overview
- Existing Site Overview
- Site Design Considerations
- Regulatory Process
- Project Contact Information
- Questions & Answers

Special thanks to the Warren Baptist Church for allowing the use of their space to hold this meeting

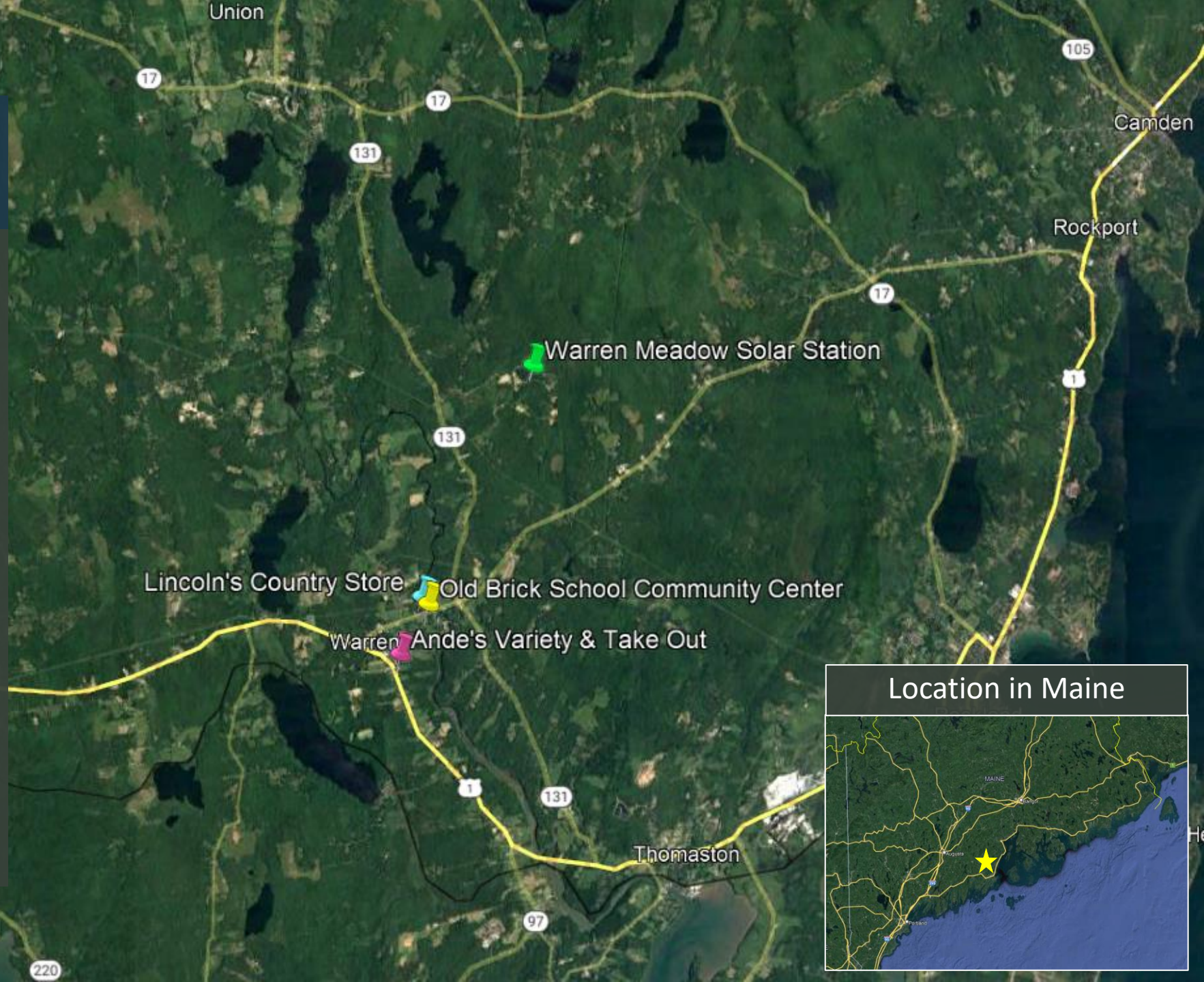
PROJECT OVERVIEW

- Warren Meadow Solar Station's will provide clean, reliable energy to Maine ratepayers while protecting the local environment and character
- 100 MW DC, 75 MW AC utility-scale solar photovoltaic array
- 157,808 MWh of clean energy generated per year; enough to power 18,450 Maine homes
- Interconnection to CMP's existing line (Section 80)
- Holds a position in the ISO-NE interconnection queue



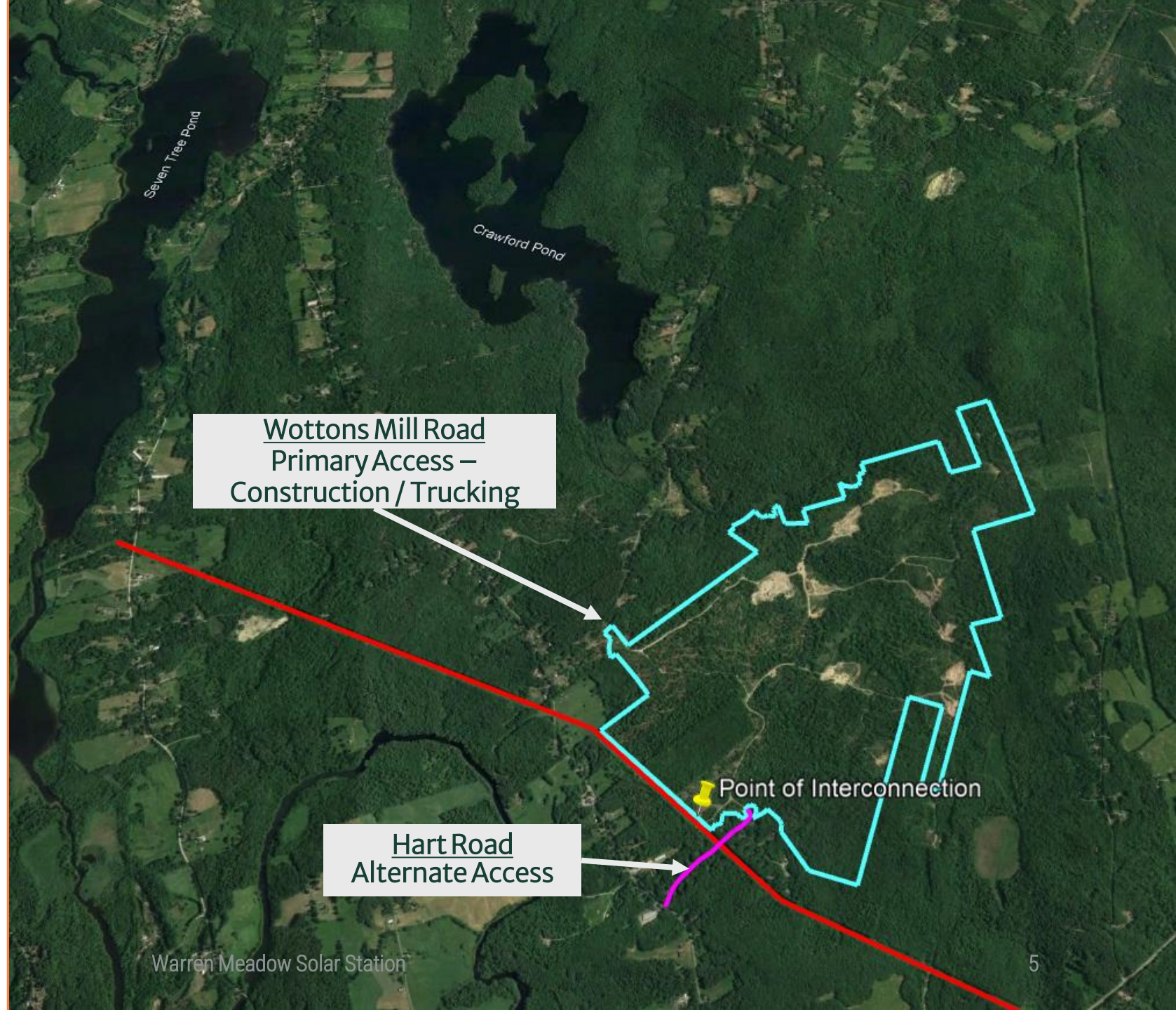
PROJECT OVERVIEW

- Construction jobs for nearby residents – apprenticeships available
- Contracting opportunities for local businesses (e.g.: tree clearing, site-work, electrical and surveying)
- Major taxpayer, with very limited municipal service needs
- Support conservation and recreational initiatives on-site and nearby
- Establish pollinator habitat



PROJECT OVERVIEW

- Leased property from E.C. Hart & Sons, John Hart, and Thomas Watson and purchasing Carroll parcel
- Lease area is approx. 660 acres
- Primary access for construction/trucking
 - Access will be via existing entrance from Wottons Mill Road
- Alternate access from Hart Road
- Section 80 (in red) crosses the southwest of the site, making the site ideal for Solar Development
- Tax Map R13 Lots 1, 9, 66 & 70; Tax Map R10 lots 74, 46, 50-1, 52-1 & 53
- Rural Zoning District





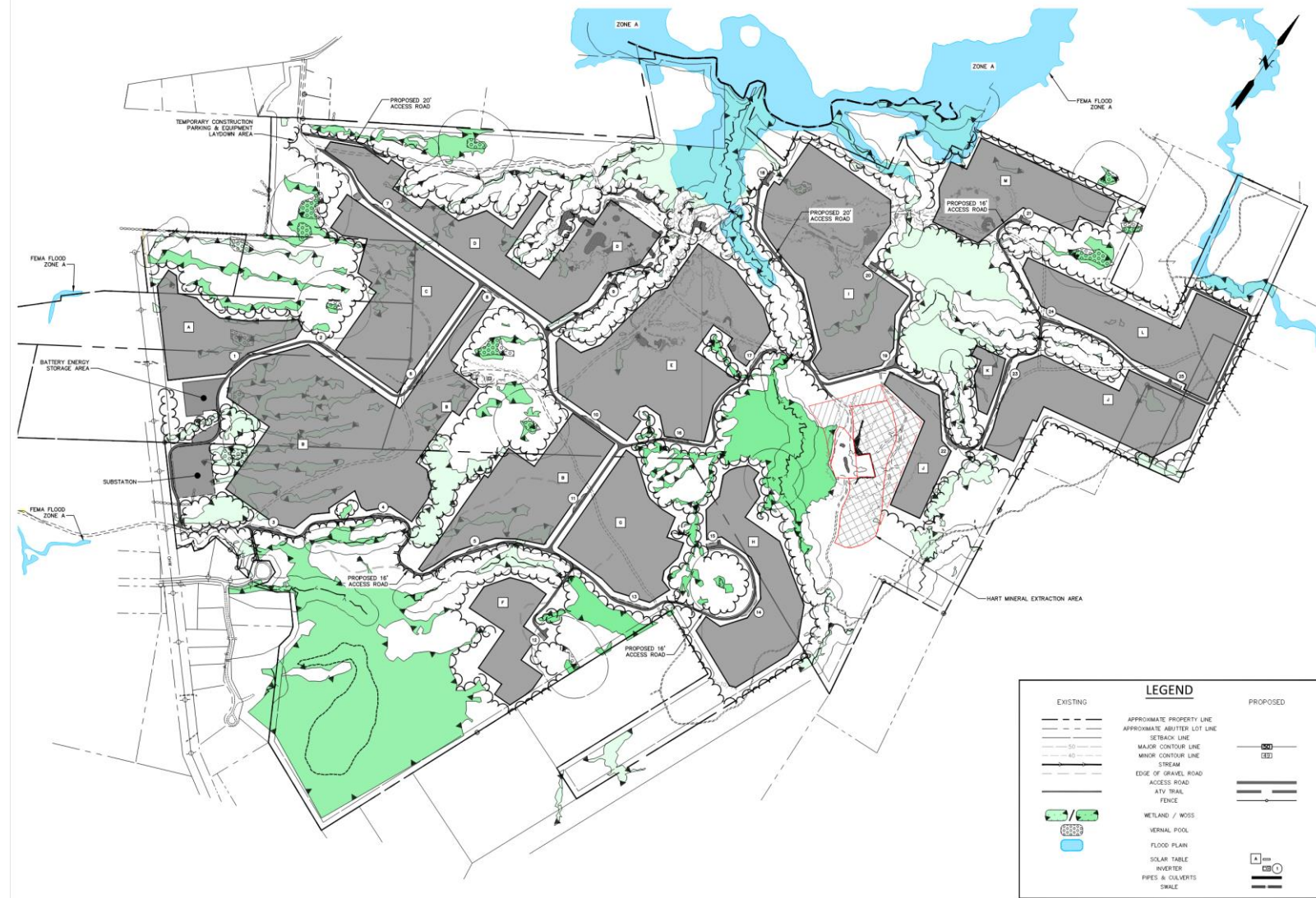
EXISTING SITE OVERVIEW

- Active quarrying and timber management
- Gravel roads throughout site
- Within Quiggle Brook and Crawford Pond watersheds
- Existing stream crossings



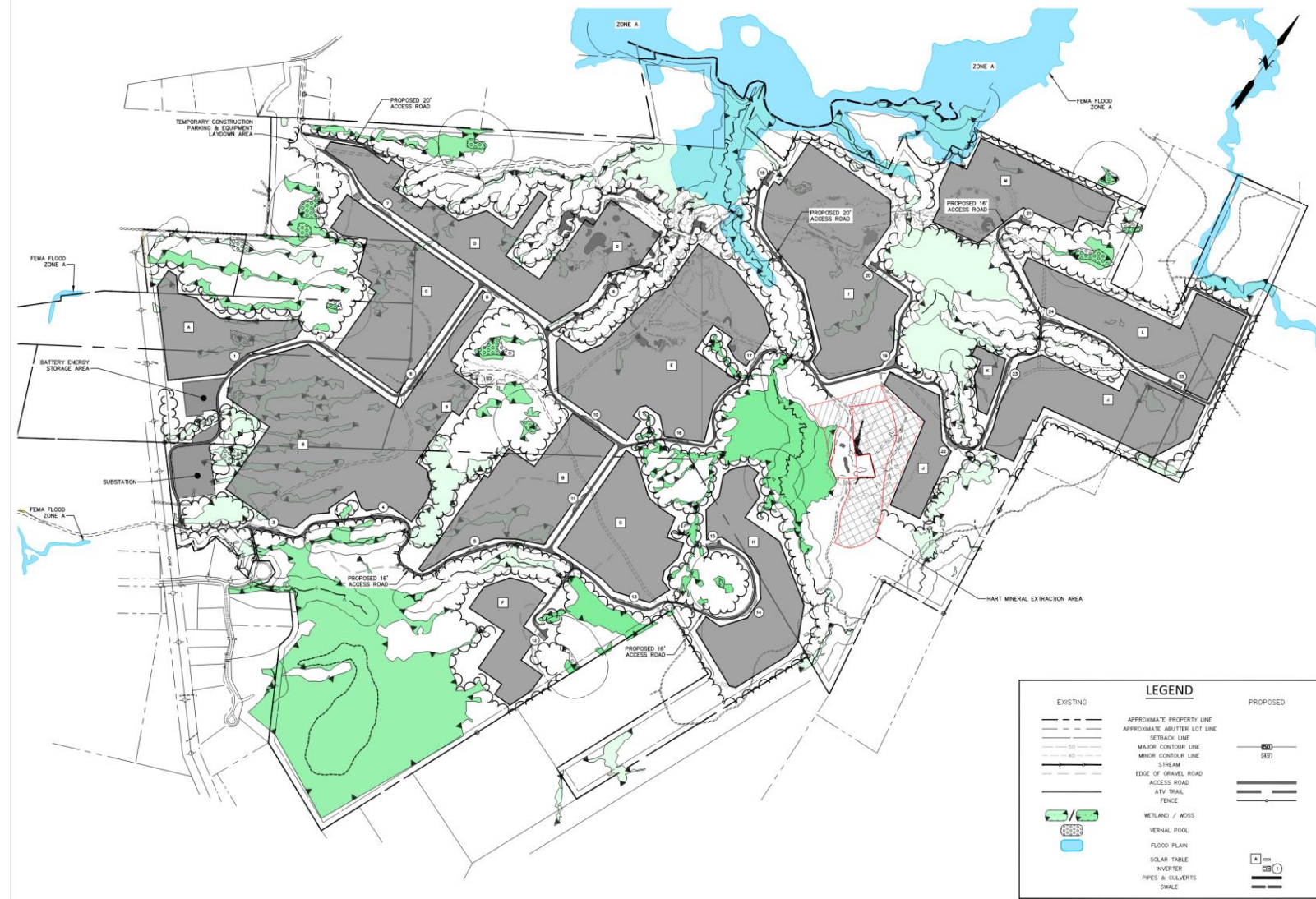
SITE DESIGN CONSIDERATIONS

- Significant Vernal Pools (SVP) & Wetlands of Special Significance (WOSS)
- Stream Protection District associated with Quiggle Brook
- Minimize impact to streams and SVP setbacks
- Minimize direct impacts to wetlands and especially to WOSS
- Erosion & sediment controls and Stormwater BMPs to MDEP standards
- Mineral extraction continuing on-site
- Avoid visual and noise impacts



SITE DESIGN CONSIDERATIONS

- Eliminated indirect impacts WOSS
- Implemented Selective Clearing Zones for shade management
- Eliminated 55 acres of solar arrays and the overall limit of clearing by nearly 50 acres
- Decreased overall wetland impacts by approx. 17 acres
- Retrofitting existing stream crossings
- Revegetating approx. 50 acres of current mineral extraction operation





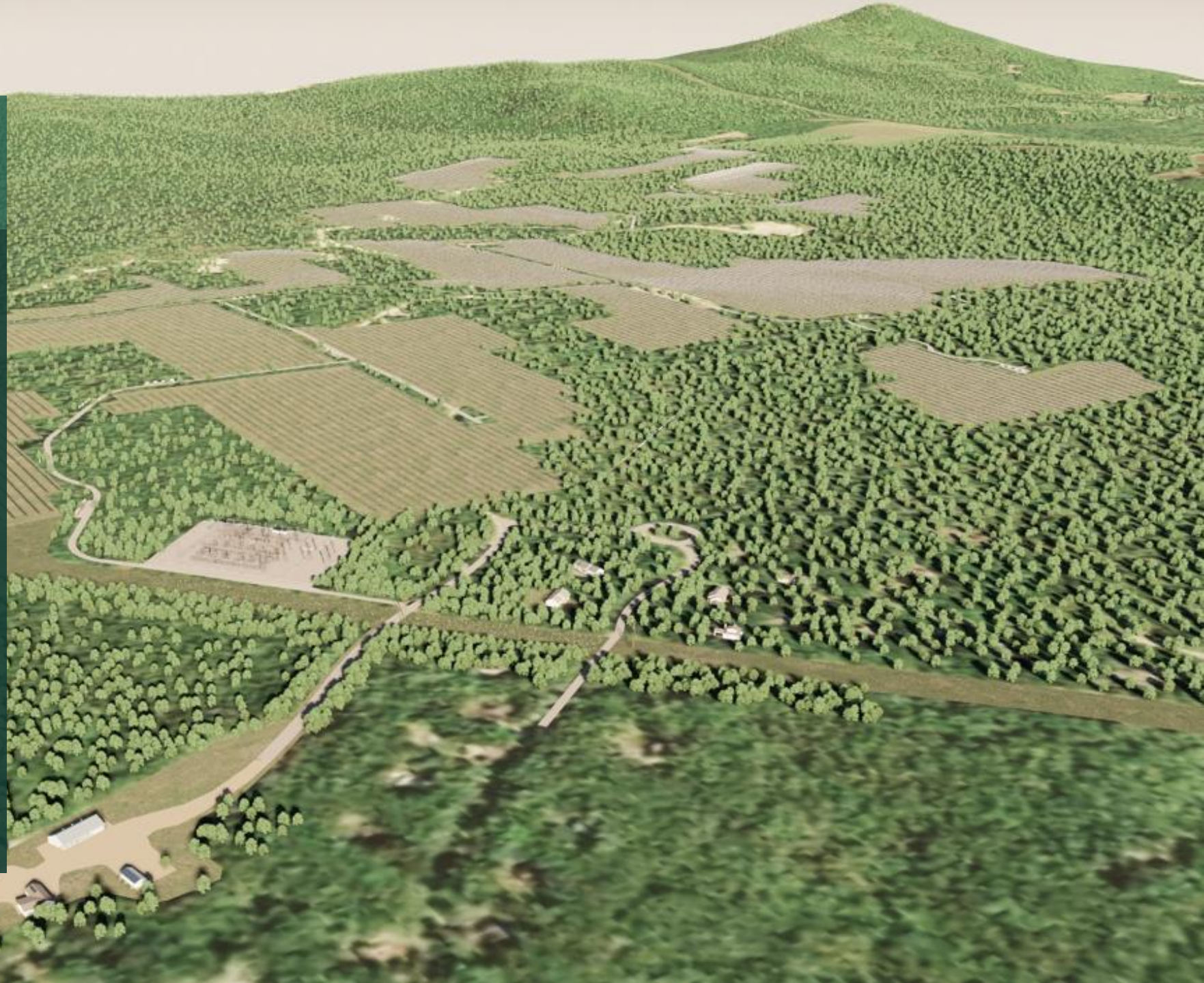
Span the stream



REGULATORY PROCESS

- Maine Department of Environmental Protection
 - Site Location of Development Act
 - Natural Resource Protection Act
- U.S. Army Corps of Engineers
- Town of Warren Planning Board

Note: image shows an aerial rendering of the proposed project

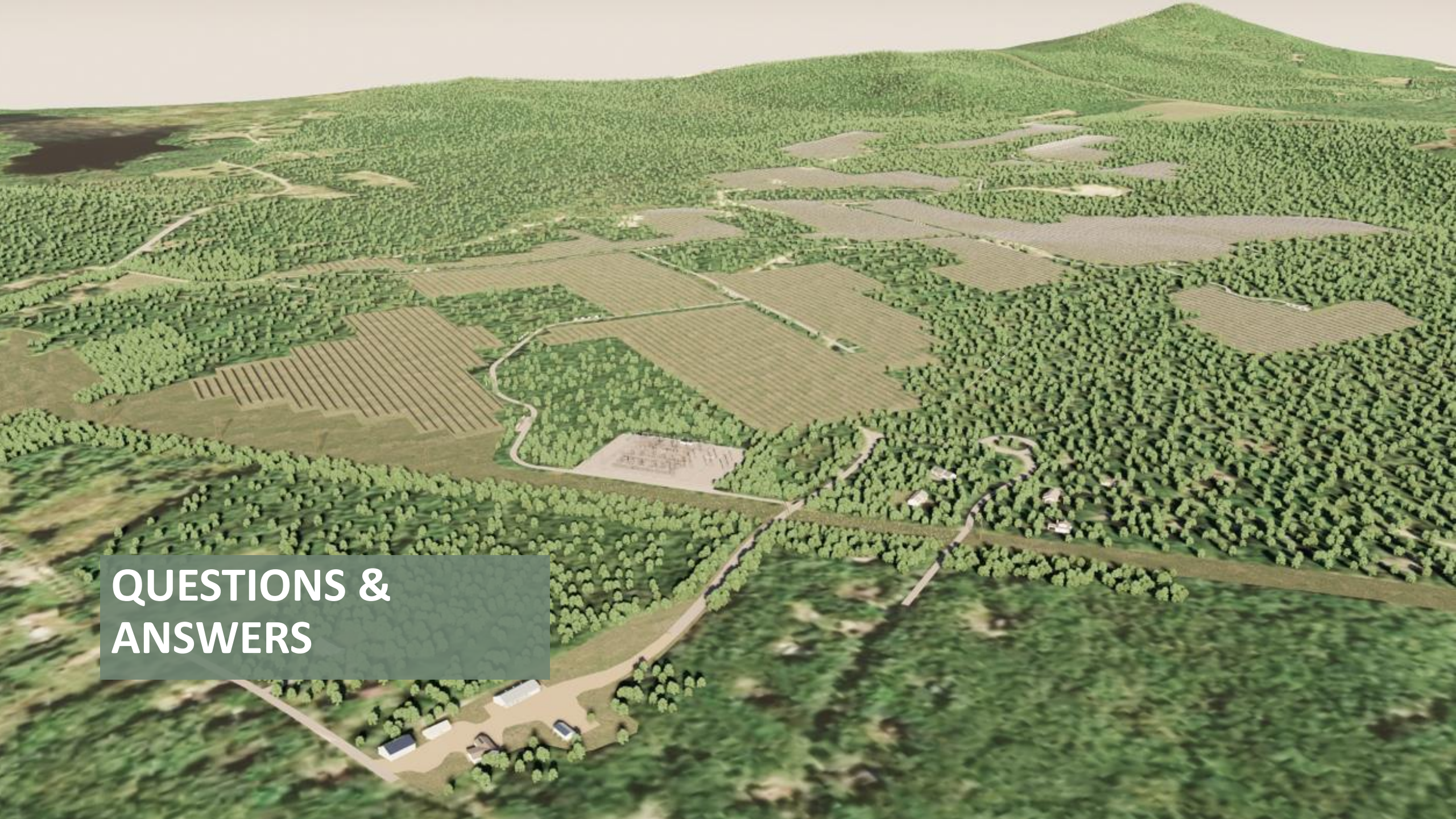


PROJECT CONTACT INFORMATION

- Civil Engineer – Fuss & O’Neill (James Lowery, P.E.)
 - Phone: 207-849-7403
 - Address: 5 Fletcher Street, Suite 1, Kennebunk, ME 04043

- Owner – Warren Meadow Solar Station LLC
 - Address: c/o Glenvale LLC, 3190 Washington Street, Boston, MA 02130
c/o Glenvale LLC, 63 Federal Street, Portland, ME 04101

- Developer – Glenvale LLC
 - Joseph Pereira – Development Director
 - Aidan Foley – CEO



**QUESTIONS &
ANSWERS**



www.glenvale.solar